



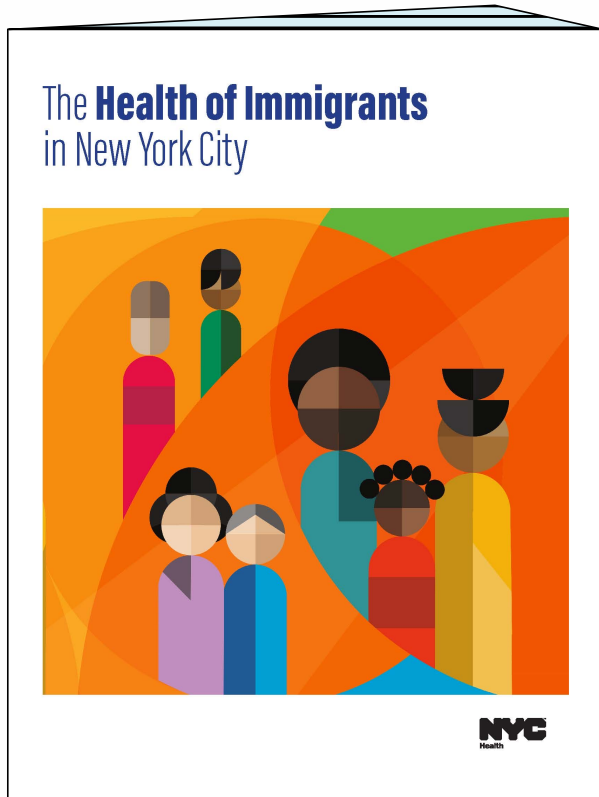
Report: The Health of Immigrants in NYC (2025)

Max Hadler

Office of Health Care Access and Policy

Martha Alexander

Bureau of Epidemiology Services



Investing in the health and well-being of immigrant New Yorkers helps our whole city and country thrive.



Process

Gather Expertise

We asked How can this report best support your efforts to promote the health of immigrant New Yorkers?

Community Partners

- Health Care Providers
- Community-based Orgs
- Other NYC Government Agencies
- Academic Institutions

Health Department Reps

- Disease Control
- Emergency Preparedness & Response
- Environmental Health
- External Affairs
- Family & Child Health
- Mental Hygiene
- Vital Statistics

Share

Released report in April 2025 during Immigrant Heritage Week, along with a press release and op-ed

Collaborated with Health + Hospitals and Mayor's Office of Immigrant Affairs:

- Roundtable at City Hall
- Open letter to immigrant New Yorkers

Posted resources for immigrants and providers

nyc.gov/immigranthealth

Every New Yorker, without exception.

You have the right to quality health care, regardless of your immigration status, ability to pay, employment status, or ability to speak English.

Learn more about your rights and find resources at **nyc.gov/immigranthealth**.





Data & Decisions

We used more than 10 different data sources to paint the picture

Health Department – Population-based surveys

- o Community Health Survey, pooled 2021-2022
- o Youth Risk Behavior Survey, 2019 & 2021
- o NYC KIDS Survey, 2021

Health Department – Surveillance data

- o Vital Statistics (Births, Deaths), 2017-2021
- o Disease Surveillance Data (HIV, TB, Perinatal Hep B)

External data from other NYC agencies

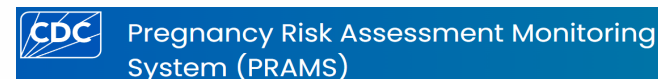
- o Housing and Vacancy Survey, 2023 (Housing Preservation and Development)
- o New arrivals data (Office of Asylum Seeker Operations)
- o Child poverty data (Mayor's Office of Opportunity)
- o Documentation status (Mayor's Office of Immigrant Affairs)

External (national level)

- o American Community Survey, 2017-2021 (US Census)
- o Pregnancy Risk Assessment Monitoring System, 2019-2021 (CDC)



Housing Preservation & Development



Highlighting the diversity of immigrant strengths and needs

- Presented data for **places of birth** rather than “countries”
 - Communities representing at least 1-2% of NYC immigrants
 - Appendix lists all countries and places by region
- Rolled up **multiple years of data** for larger sample size
 - Different years or range depending on data source
- Considered immigrants’ **multiple intersecting identities**
 - Race/ethnicity, gender, age, sexuality, household poverty...



Key Findings

Immigrants by Neighborhood

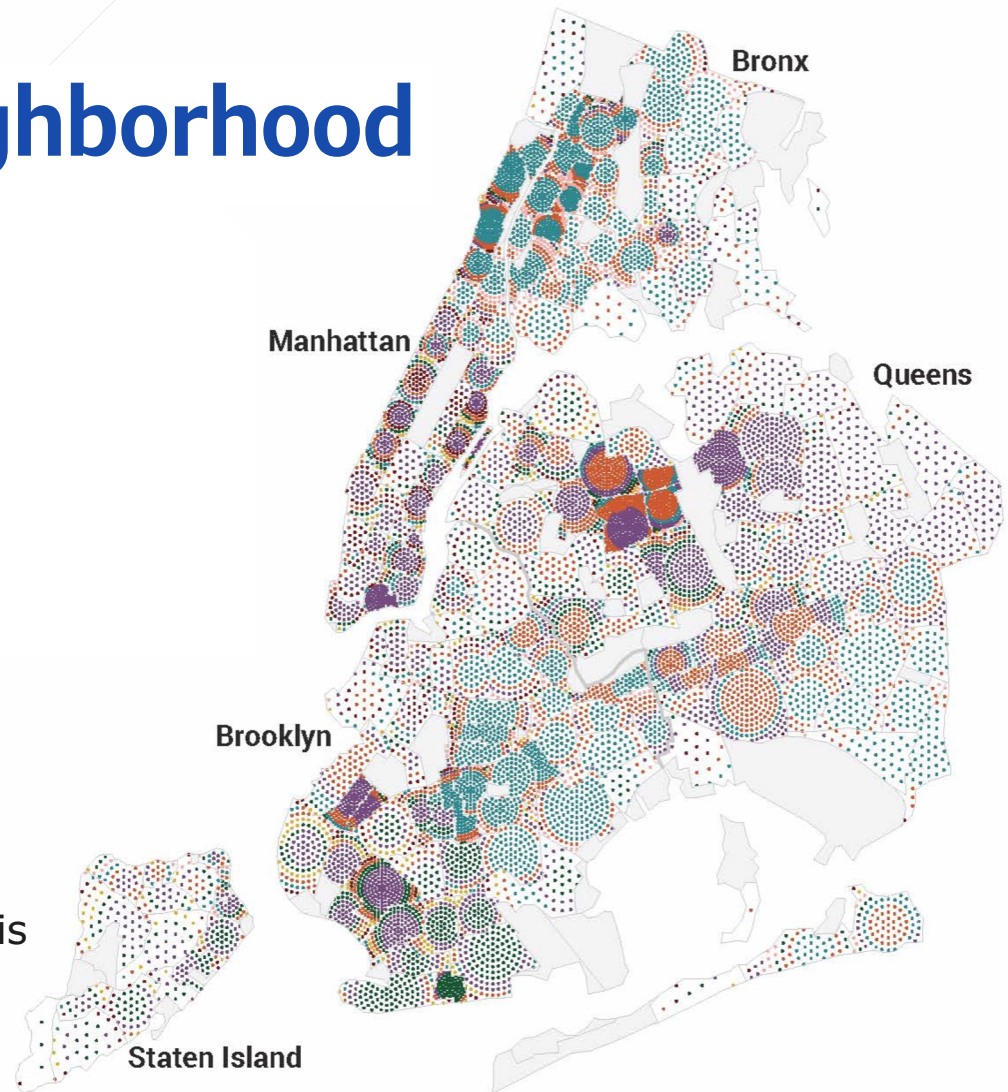
Region of origin

- Caribbean
- Asia and Pacific
- Mexico and Central and South America
- Eastern Europe and Central Asia
- Western Europe and Canada
- Sub-Saharan Africa
- Middle East and North Africa
- Oceania

One dot = 250 people

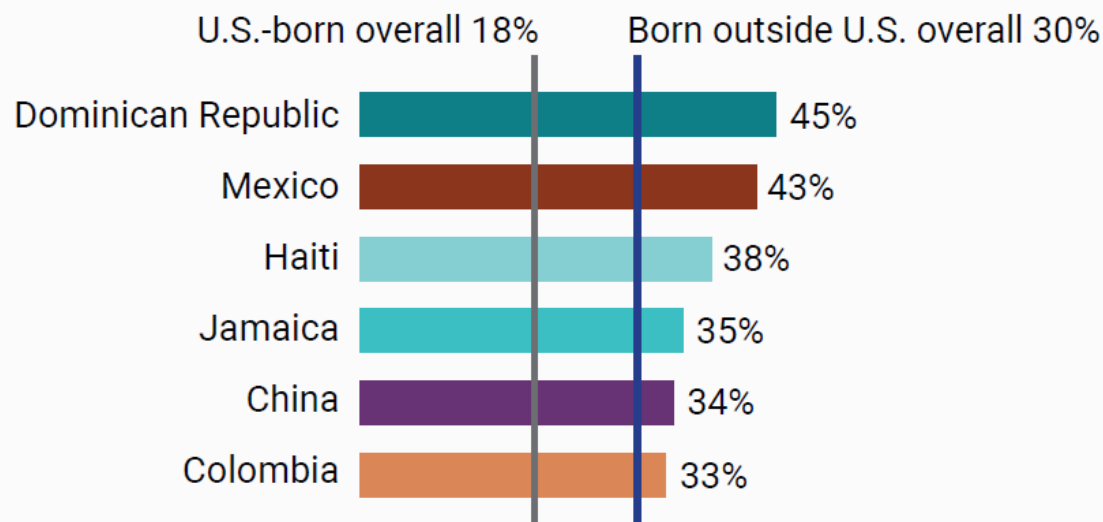
Dots show density within each neighborhood tabulation area (NTA)

The largest region of origin for each NTA is shown at its center



Data source: American Community Survey 2018-2022

Immigrants from the Dominican Republic and Mexico most commonly work in service occupations



“Our immigrant patients are hard workers — even willing to put up with poor working conditions, long hours and low pay in order to get ahead. Many times, they are working to help families back home to put food on tables or send their children, siblings or relatives to school, or send money for medical care.”

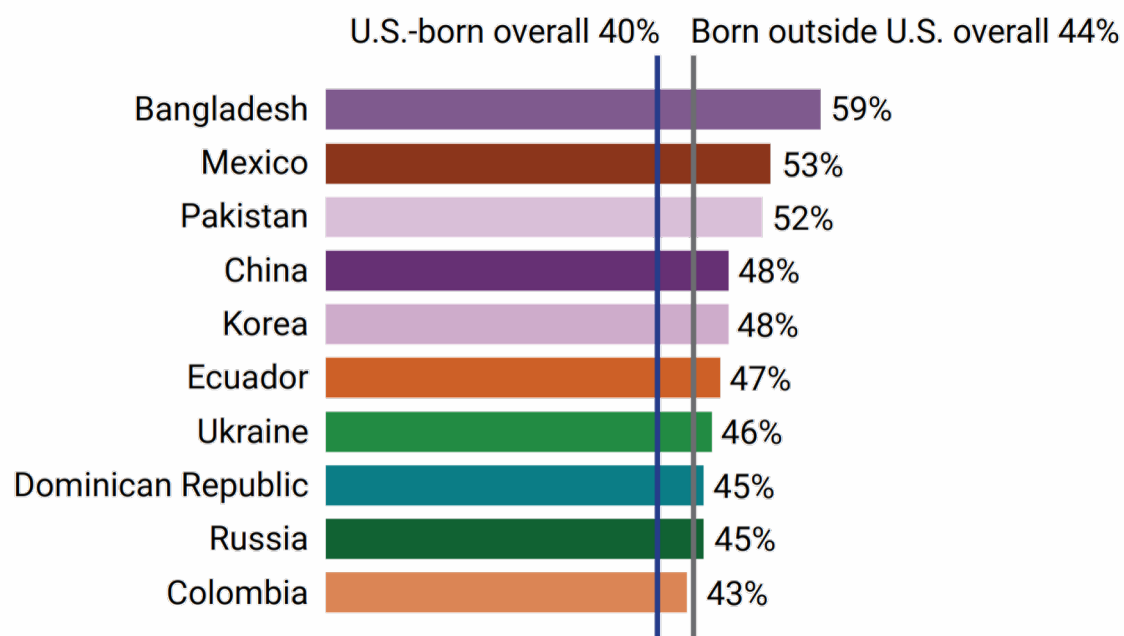
— Terra Firma

Among the top places of origin, those with the largest percentage of employment in service occupations among New Yorkers born outside the U.S.

Data source: American Community Survey 2017-2021

Immigrants from many places experience high rent burden

Percentage who pay rent and utilities over 30% of their income

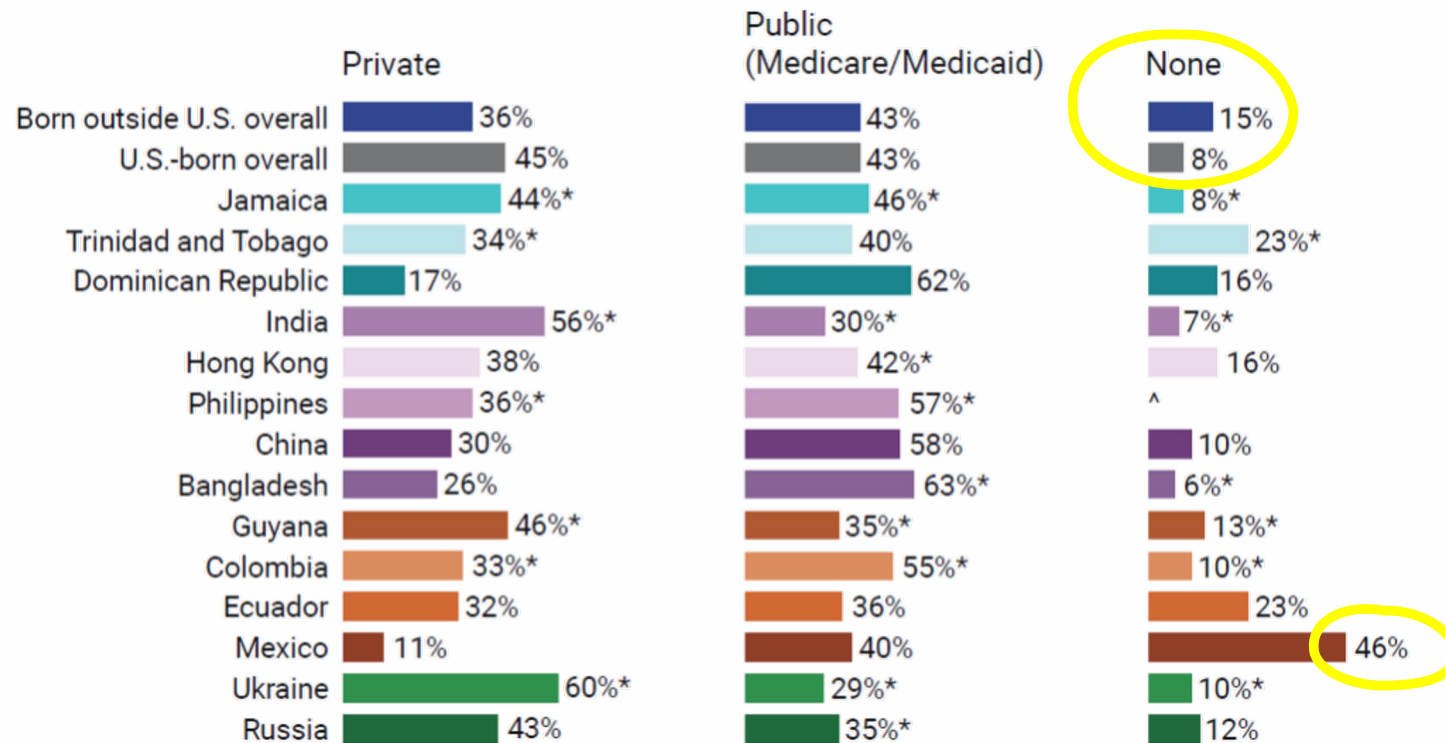


Note: Highest percentage among the top places of origin

Data sources: American Community Survey 2017-2021

Immigrant adults are nearly twice as likely to be uninsured

Insurance type among adult New Yorkers



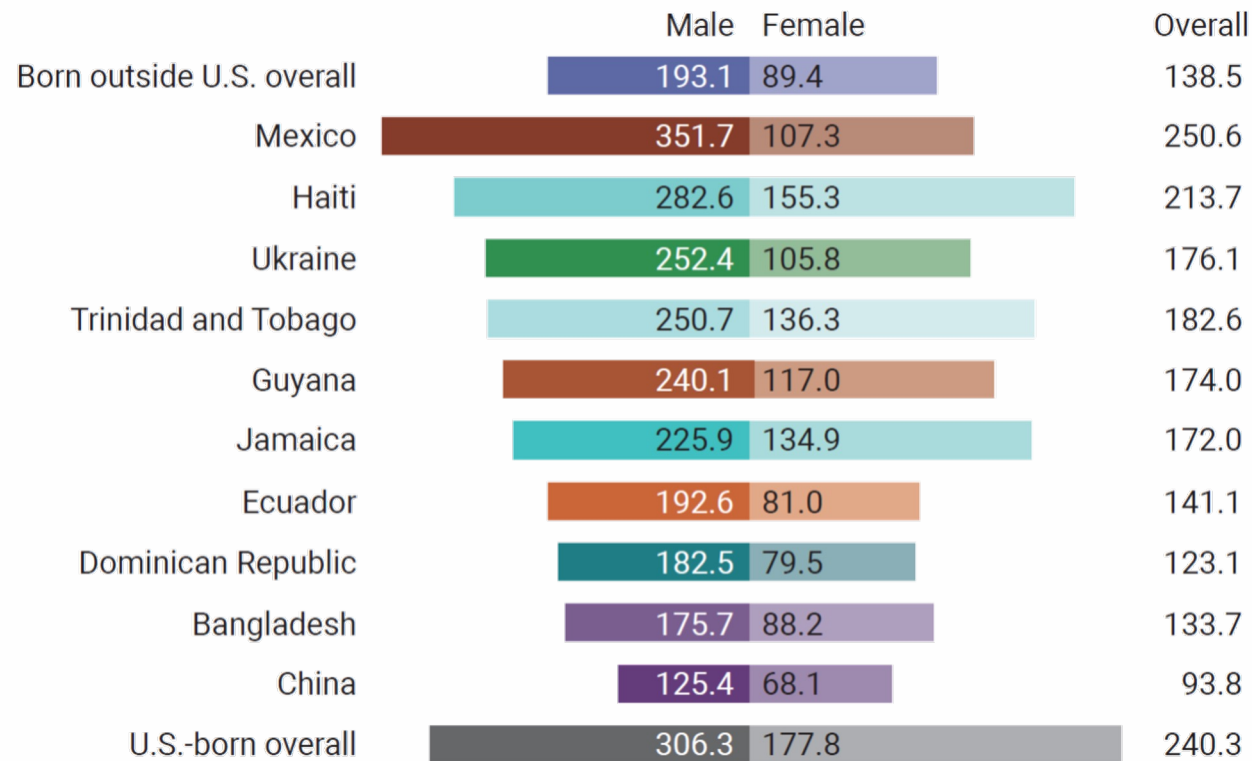
Notes: Among top places of origin. "Other" insurance category not visualized.

*Interpret estimate with caution due to small sample size. ^Suppressed due to imprecise and unreliable estimate.

Data source: NYC Health Department Community Health Survey 2021-2022

Rate of premature death by sex and place of origin

Rate per 100,000 people



Note: Among the ten places of origin with the highest numbers of premature deaths

Data source: NYC Health Department Office of Vital Statistics, 2020-2021

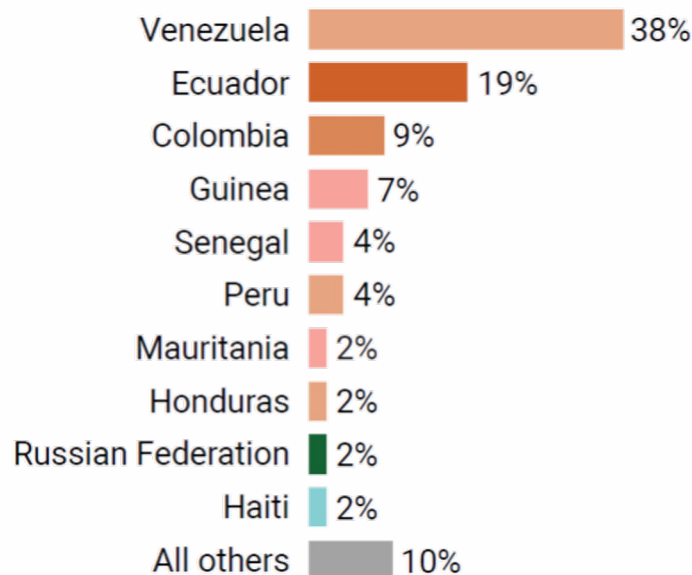
New Arrivals

Over 200,000 people entered NYC Emergency Housing between spring 2022-June 2024

- 78% were members of families with children under 18
- 19% were single adults

As of June 30, 2024, 65,300 of these new arrivals remained in NYC Emergency Housing

Top places of origin among new arrivals to NYC, April 2022-June 2024



Policy implications and what's next

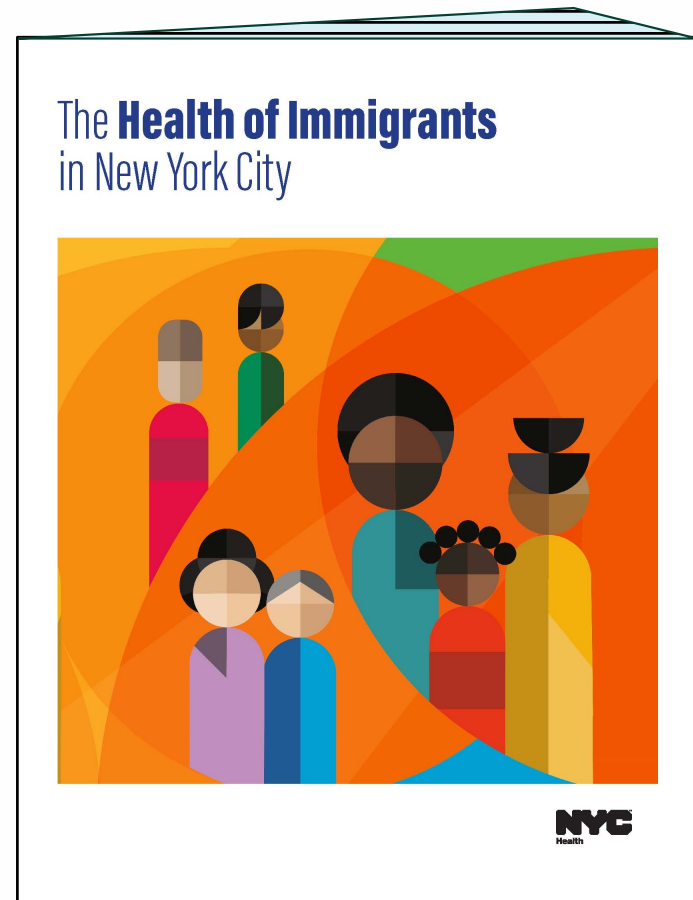
- Build off successes of recent years
 - IDNYC integration with BigAppleRx, CIR, H+H
 - NYC Care
 - Immigration legal services in health care settings
 - Public health coverage eligibility expansions
- Eliminate state/federal discriminatory public benefits eligibility rules
- Focus resources on outreach/education re: available services, rights in immigrant communities
- Ensure language access in health care and other institutional settings

Read and share the report

Posted at
nyc.gov/immigranthealth

Also check out

- Summary in Spanish, Traditional Chinese, Simplified Chinese
- Appendix of data tables



We're here to help



Find Health Department data, publications, and resources at nyc.gov/health/data.

You can use these resources to support your work.

Email query@health.nyc.gov with any questions, or to schedule a “how to access data” session for your team.

Thank you!

- We hope this report will be a valuable resource
- We are grateful for the generous contributions of our Health Department colleagues and community partners
- Special thanks to Fitgi Saint-Louis (@fitgisaintlouis) for the use of her community mural “We Gon’ Be Alright” on the report cover
- mhadler@health.nyc.gov

