



# CHECK HEP C PATIENT NAVIGATION PROGRAM

## 2018 REPORT

### BACKGROUND

In New York City (NYC), 116,000 people are infected with hepatitis C (Hep C). Treating and curing Hep C reduces the risk of liver disease, cancer and premature death, and prevents ongoing transmission of the virus.

People with Hep C face barriers to accessing Hep C care and treatment, including stigma, homelessness, mental health issues and medication restrictions.

Patient navigation can help people with Hep C overcome barriers to accessing and completing Hep C care and treatment.

### PROGRAM DESCRIPTION

The Check Hep C Patient Navigation Program was established in 2014 through funding from the New York City Council, and is administered by the NYC Health Department. Funding from the New York City Council allows organizations to train and employ at least one full-time patient navigator.

The goal of the program is to navigate people currently infected with Hep C through medical care and treatment to cure the infection.

Patient navigators are trained to provide:

- Hep C health promotion
- Linkage to Hep C care and supportive services
- Navigation through Hep C medical evaluation and treatment, and into reinfection prevention services

### HEP C IN NYC AND CHECK HEP C PATIENT NAVIGATION PROGRAM LOCATIONS

The following map shows the rate of newly reported Hep C cases in 2017 by neighborhood tabulation area and the Check Hep C Patient Navigation Program locations.

#### Health Centers and Hospitals

1. Bedford-Stuyvesant Family Health Center
2. Bellevue Hospital (H+H)
3. BronxCare Health System
4. Brownsville Multiservice Family Health Center
5. Community Healthcare Network
6. Coney Island Hospital (H+H)
7. Harlem United
8. Kings County Hospital (H+H)
9. Montefiore Comprehensive Health Care Center

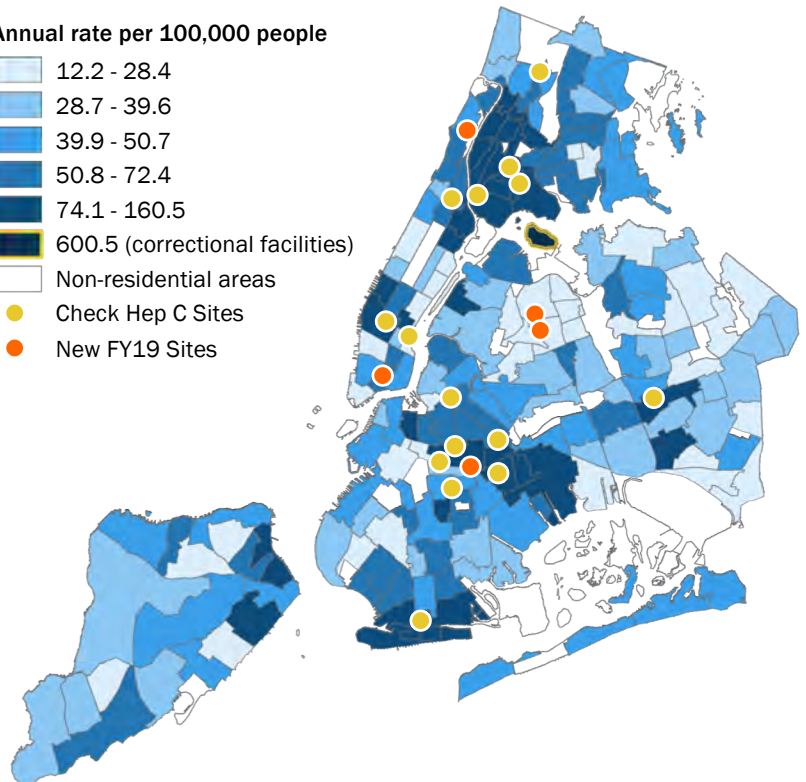
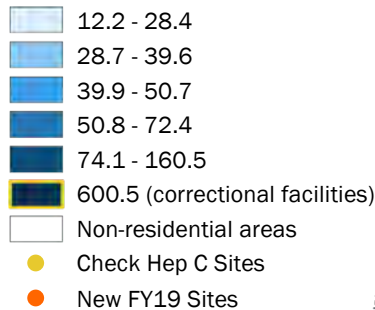
#### Community Organizations

10. BOOM!Health
11. Family Services Network of New York
12. Praxis Housing Initiatives

#### Newly Funded Organizations in FY2019

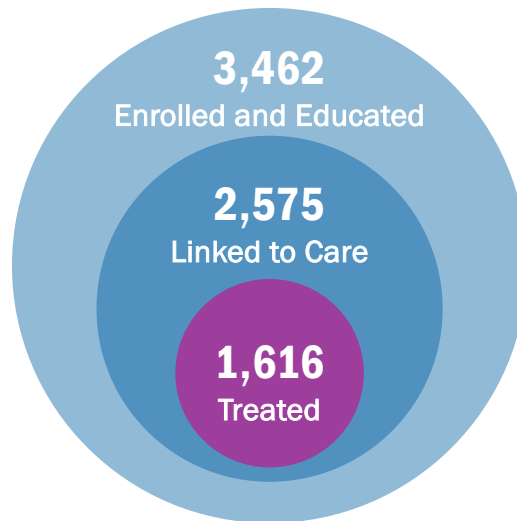
1. APICHA Community Health Center
2. Alliance for Positive Change
3. Elmhurst Hospital (H+H)
4. Kingsbrook Jewish Medical Center
5. Washington Heights CORNER Project

#### Annual rate per 100,000 people

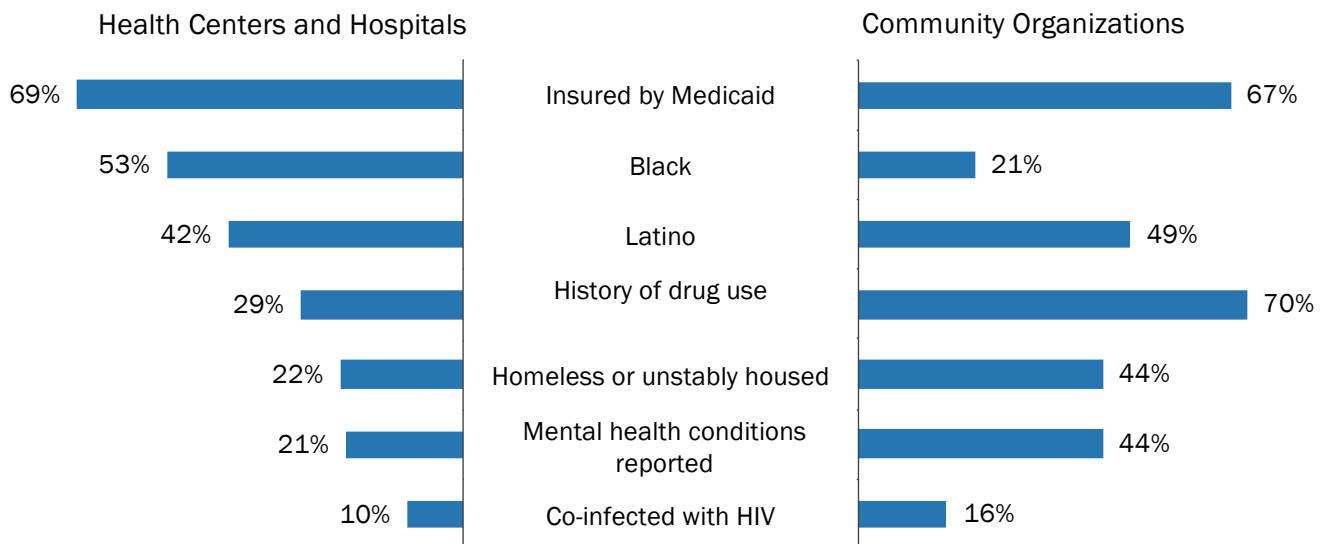


### PROGRAM OUTCOMES

From January 1, 2015, to June 30, 2018, 3,462 people infected with Hep C were enrolled and educated. Of these, 2,575 were linked to Hep C care and 1,616 were treated and likely cured.



### PATIENT CHARACTERISTICS



### PROGRAM FINDINGS

Funded organizations identified the following gaps limiting the impact of the program:

- Resources to provide housing access services for program participants
- Resources and support to provide Hep C clinical care at community organizations
- Resources to support case investigation and outreach to find patients who are lost to care