



Sandra Atlas Bass  
Center for Liver Diseases  
2016 Update

# Northwell Health

## Response to the Liver Epidemic

- 2012: Establishment of Academic Division of Hepatology at NSUH and LIJ
- 2015: Expanded Divisional Team to 8 cFTEs:
  - 4 Hepatologists
  - 2 NPs
  - 1 Pharmacist
  - 1 RN Patient Navigator

# Northwell Health

## Response to the Liver Epidemic

- 2014: Initiated Access and Branding Initiative  
**855-60-LIVER or 516-562-4664**
- 2014: Establishment of the Sandra Atlas Bass Center for Liver Diseases

### **Multidisciplinary Approach to Liver Care**

- Hepatologists
- Surgeons
- Interventional and Diagnostic Radiologists
- Pathologists
- Psychiatrist
- Cardiologist
- Infectious Disease
- Nephrology

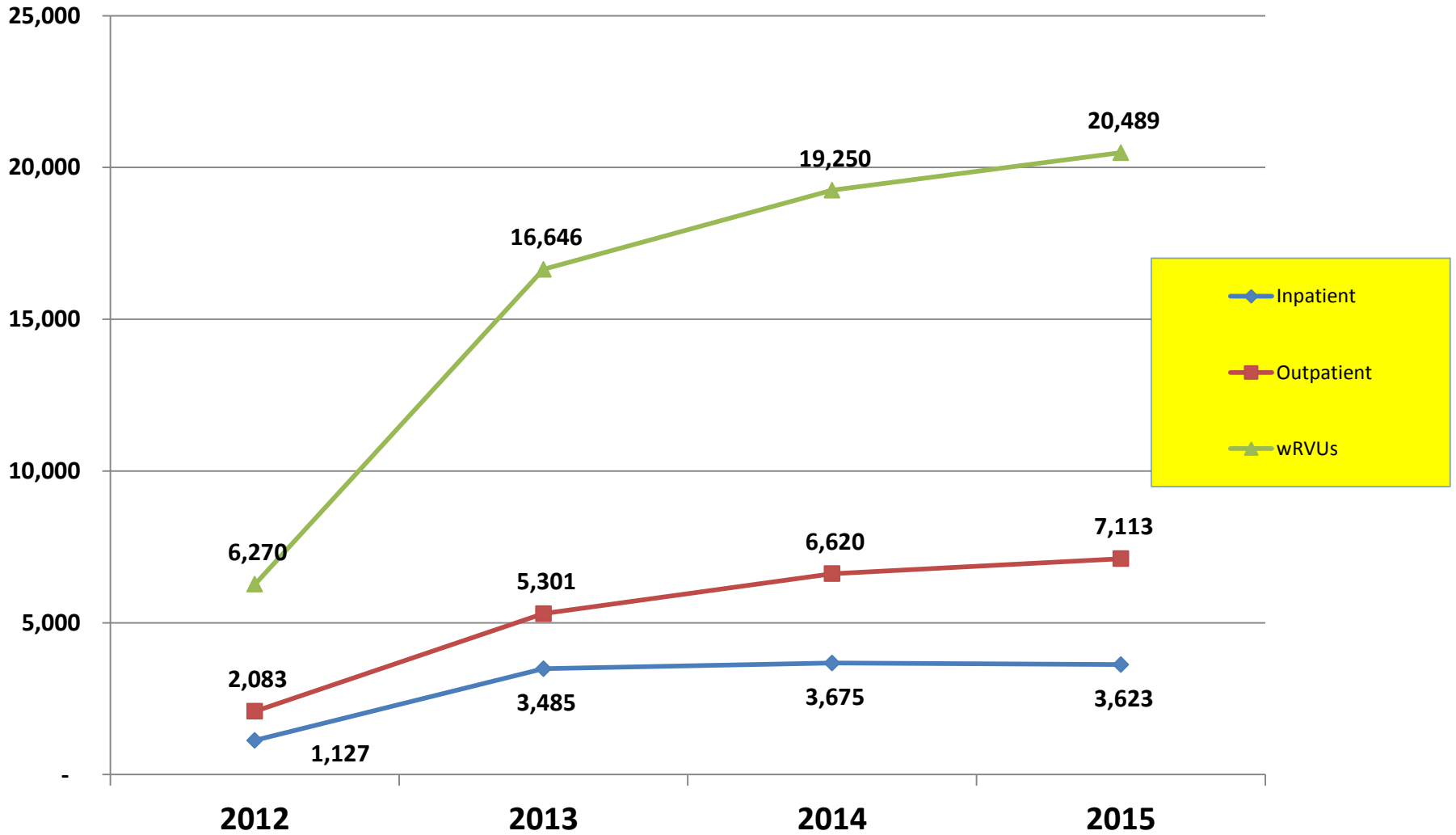
# **Dozen Reasons to Consult with the Liver Service**

- 1 Abnormal liver tests/imaging**
- 2 Cirrhosis**
- 3 Ascites**
- 4 Jaundice**
- 5 Evaluation of liver patients prior to surgery**
- 6 Pre-transplant evaluation**
- 7 Viral hepatitis**
- 8 Autoimmune liver disease, PBC, PSC**
- 9 Non-alcoholic fatty liver disease**
- 10 Alcoholic liver disease**
- 11 Liver cancer**
- 12 Drug induced liver disease**
- 13 Encephalopathy**

Center for Liver Diseases & Division of Hepatology provides consultative and procedural services by full-time physicians board certified in Gastroenterology and Transplant Hepatology with special training in Hepatology. We specialize in the diagnosis & treatment of all liver diseases such as chronic hepatitis B and C, hereditary liver disease, autoimmune liver disease, drug induced liver disease, non-alcoholic fatty liver disease, alcoholic liver disease and cirrhosis and its complications. The Center evaluates patients for liver transplantation and cares for patients after liver transplantation. The Center has a comprehensive clinical trials program specializing in diseases of the liver with a special emphasis on hepatitis C, hepatitis B, liver cancer and fatty liver disease.

# Center Growth Chart

## Volume



# Northwell Health Response to the Liver Epidemic

## Hub & Spoke Model

- Currently Offering Services at 5 Locations:
  - Manhasset
  - Great Neck
  - Rego Park
  - Bayshore
  - Woodbury
- Future Locations Targeted:
  - Brooklyn
  - Additional Queens
  - Additional Suffolk – Peconic
  - Westchester
  - Additional Manhattan
  - Lenox Hill
  - Staten Island

# Northwell Health Response to the Liver Epidemic

## The Hub

- Establishment of the Sandra Atlas Bass Center for Liver Diseases at 400 Community Drive

**Over \$5M in philanthropy raised**

Destination Service

Multidisciplinary Team at a Single Location



North  
Shore LIJ SANDRA ATLAS BASS  
CENTER FOR LIVER DISEASES



# Sandra Atlas Bass Center for Liver Diseases

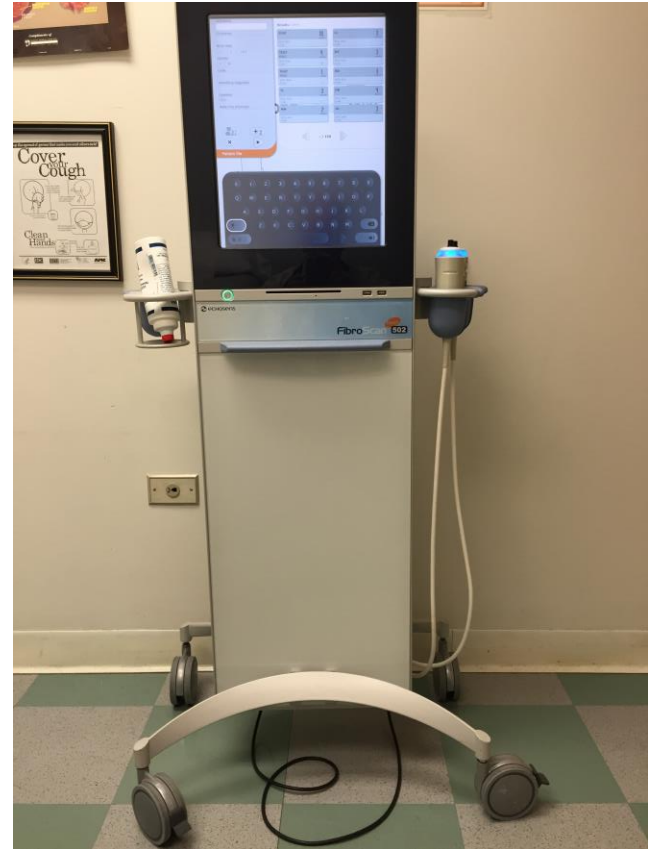


# Ongoing Initiatives

- Pharmacy Program
- Advanced Technology
  - Fibroscan
- Access and Branding
  - 1-855-60-LIVER
- Hub and spoke
- 10,000 lives initiative to increase organ donation awareness & registration
- Telemedicine program
- Community Outreach
- Cooperation with ALF, ELF, & other professional organizations
- Philanthropy

# Fibroscan

- Examination time < 5 minutes
- Median value of 10 successful acquisitions
- Replaces liver biopsy
- Determines prognosis



# Research

- > 100 clinical trials in past 4 years
- One of the largest trial research volumes in the health system
- 2013-15
  - Publications in NEJM, Lancet, J Hepatology
  - More than 30 presentations at national/international meetings

# Clinical Focus

## Treatment of Hepatitis C

- All oral therapies approved in past 1 year
- Cure rates, all comers, > 90%
- Duration of therapy 8, 12 or 24 weeks
- North Shore Liver Center involved in the development of all newly approved HCV therapies

# Sandra Atlas Bass Center for Liver Diseases HCV Medication Program in Cooperation with Vivo Pharmacy

## Core Team Members:

Senior attending physician  
Pharmacist (PharmD)  
Pharmacy Technician  
Patient Navigator  
Nurse Practitioner  
Vivo Pharmacy Staff

# HCV Medication Program: Pillars of the Service Model & Accomplishments Since Inception

## Medication Acquisition

- 98% drug approval (national average < 50%)
- Process development
  - National recognition

## Patient Services

- Improved patient experience
- Improved patient satisfaction

## Research and Outcomes

- > 95% cure rate
- Involvement in national databases
- Publications

## Teaching and Education

- Cooperation with St John's
- Cooperation with Vivo

# Rx e-prescribed to Pharmacy

**Approved**

**Denied**

BUT... Not preferred Pharmacy → Send Rx to "preferred pharmacy" (Mailorder)

Copay > \$50

Next PAGE !!!

Copay Assistance Card

Financial Assistance program



# PRESCRIPTION DENIED

**Prior Auth  
Required**

**Non-formulary  
Drug**

**Not Preferred  
Location  
(Pharmacy)**

**Exceeds max  
amount**

**More clinical  
info required**

Next PAGE !!!

Call Rx insurance  
to inquire further

Fax Rx to  
Preferred  
Pharmacy  
(Mailorder)

Call Rx insurance  
to inquire further

Call Rx insurance  
to inquire  
further

High Co-  
Pay

Drug  
not  
covered  
at all

Prior Auth Req

Appeal X 2

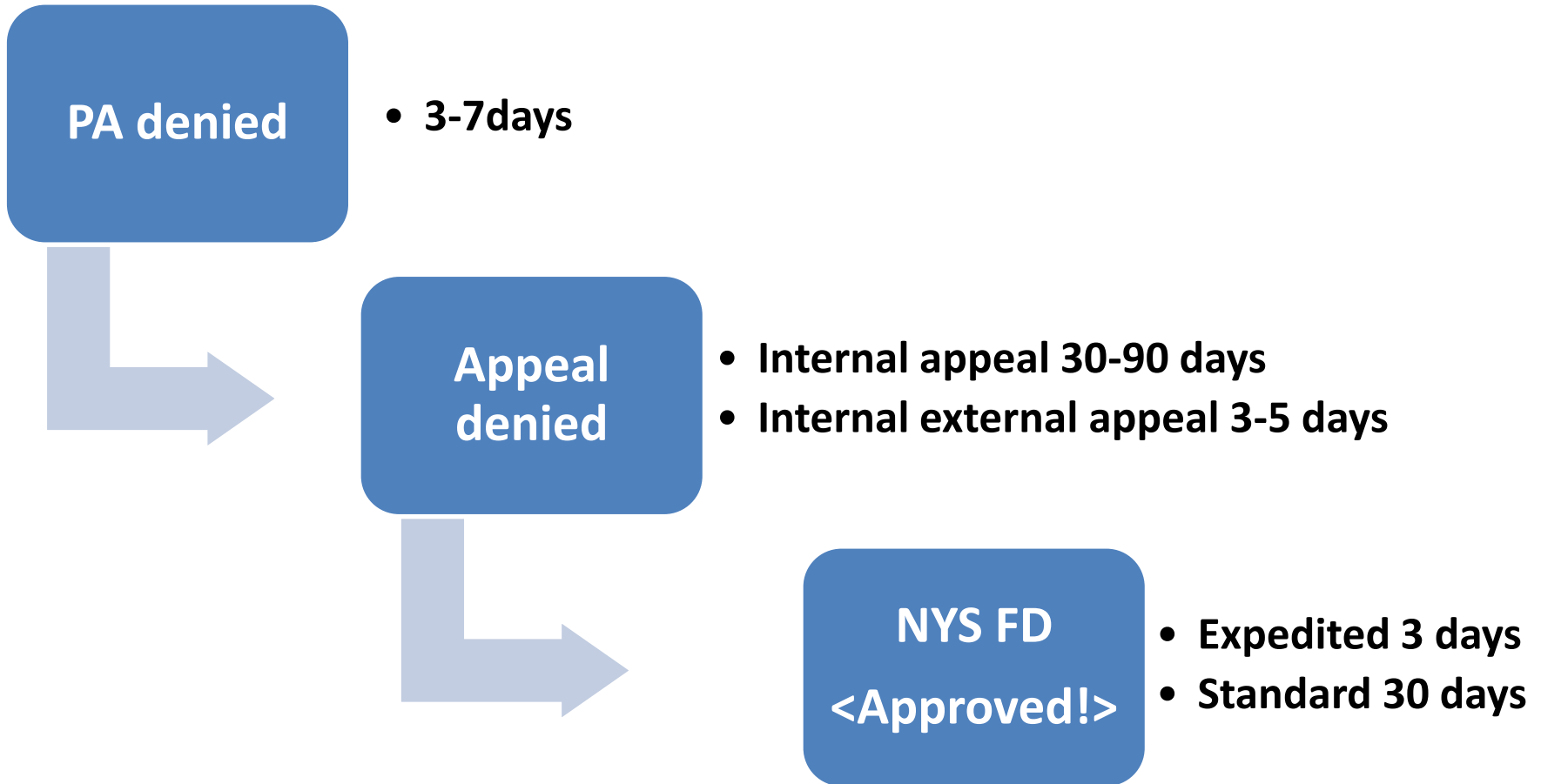
Approved

Pt not  
sick  
enough

Financial Assistance  
program

Appeal X 2

# Medication Approval Timeline



# Our numbers...

- **89% approved rate**
- **826 patient approved for HCV medication**
- **94.9% of all approved patients started HVC treatment**

# Sandra Atlas Bass Center for Liver Diseases



# General Financial Assistance Programs

## Copayment Assistance Programs

**Patient Access Network (PAN)**

[www.panfoundation.org](http://www.panfoundation.org)

(P) 866-316-7263

**Healthwell foundation**

[www.healthwellfoundation.org](http://www.healthwellfoundation.org)

(P) 800-675-8416

**Johnson and Johnson**

[www.jjpaf.org](http://www.jjpaf.org)

(P) 800-652-6227

**Patient Advocate Foundation**

[www.copays.org](http://www.copays.org)

(P) 800-532-5274

# HCV Medication Specific Financial Assistance Programs

Medication	Financial Assistance Resources
Harvoni® & Sovaldi®	<b>SupportPath</b> <a href="http://www.mysupportpath.com">www.mysupportpath.com</a> (P) 855-769-7284 (F) 855-298-8700
Daklinza®	<b>BMS Patient Assistance Foundation</b> <a href="http://www.bmspaf.org">www.bmspaf.org</a> (P) 800-736-0003
Olysio®	<b>Janssen Patient Assistance</b> <a href="http://www.olsio.com/support/financial-assistance">http://www.olsio.com/support/financial-assistance</a> (P) 800-652-6227
Viekira®, Technivie®	<b>Proceed</b> <a href="https://www.viekira.com/proceed-program">https://www.viekira.com/proceed-program</a> (P) 855-765-0504 (F) 855-886-2481
Zepatier®	<b>Merck Access Program</b> <a href="http://www.merckhelps.com/ZEPATIER">http://www.merckhelps.com/ZEPATIER</a> (P) 1-866-251-6013

**THANK YOU**